



Making a box

You need to measure the item first, and then decide on the depth of the box.

The board can make various deep boxes in intervals of 1.5 cm, from 1.5 to 16.5 cm. To measure the card, place the item (which you wish to make the box of) on your sheet of card, and from the end, measure TWICE the depth of your box, plus an extra half a cm. So for a box of depth 3cm, allow 6.5cm.

Do the same lengthways, then using the sheet you've just cut as a template, mark and cut a second piece of card exactly the same size. To make the lid place your sheet of card against the side marked "box lid" and score along the line you have chosen (lines are spaced at 1.5cm intervals which represents the depth of the box).

In the corners where the lines intersect cut a small v-shaped notch as shown in the picture. To assemble your box fold the flaps inside of the edges and glue them to the inside edge of the box in each corner. Hold your corners together with paperclips until the glue has dried.



Vary with ribbons, beads, brads, eyelets, embellishments, buttons from the Rayher assortment. Further shapes and sizes and a lot of ideas are mentioned in the instruction of "THE ENVELOPER^{pro.}" and "TOP SCORE multiboard[®]".

www.rayher-hobby.de



Art.Nr. 96 683 00



© ARTWORK STATION Design & Marketing



Envelopes
•
Cards and boxes

makes envelopes in minutes

For envelopes in all sizes.

With the compability to make over 15 different cards.

For many different shapes and sizes of boxes.



MY CREATIVE WORLD!



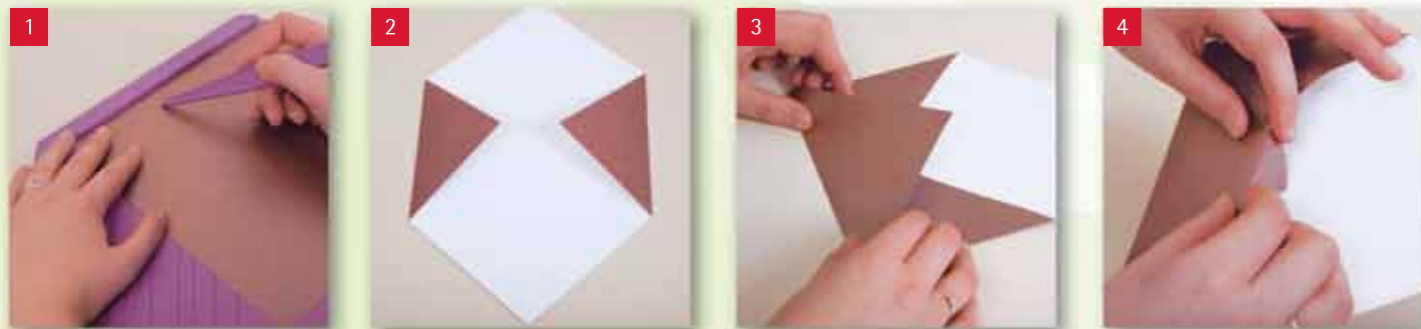


The Enveloper[®] pro item-no. 89 280 00 can be used to fold any sheet of A4, A3 or Scrapbooking paper (90-200 g/m²) into beautiful matching envelopes.

Instructions for an envelope

Firstly, define the size of the envelope you are making, and then start by cutting the required envelope blank to size. Place your paper on the board with the corner of the paper firmly against the locator point and score down the first indicated groove. Rotate the paper 180 degrees and score the same line again.

Then score the remaining 2 corners on the second indicated line. Fold the outside edges towards the centre. Apply double sided tape to the bottom edges of the flap. Fold in the bottom flap of the envelope and press down to secure the tape. Tuck the top flap in as shown.



For perfect cards and boxes in every imaginable shape and size from A4, A3 or Scrapbooking paper, TOP SCORE multiboard[®], item-no. 89 231 00.

Instructions for a 4-fold concertina

For a 4-fold A4 concertina, take a sheet of A4 card and score on both the „Gatefold A4“ and the „Half Fold A4“ lines, then rotate 180 degrees and score again on the „Gatefold A4“. Again cut a section away from the first crease line to mid way down the edge of the opposite side. For a 4-fold A5 concertina, repeat the same procedure but using the „Gatefold A5“ and the „Half fold A5“ crease lines instead.

